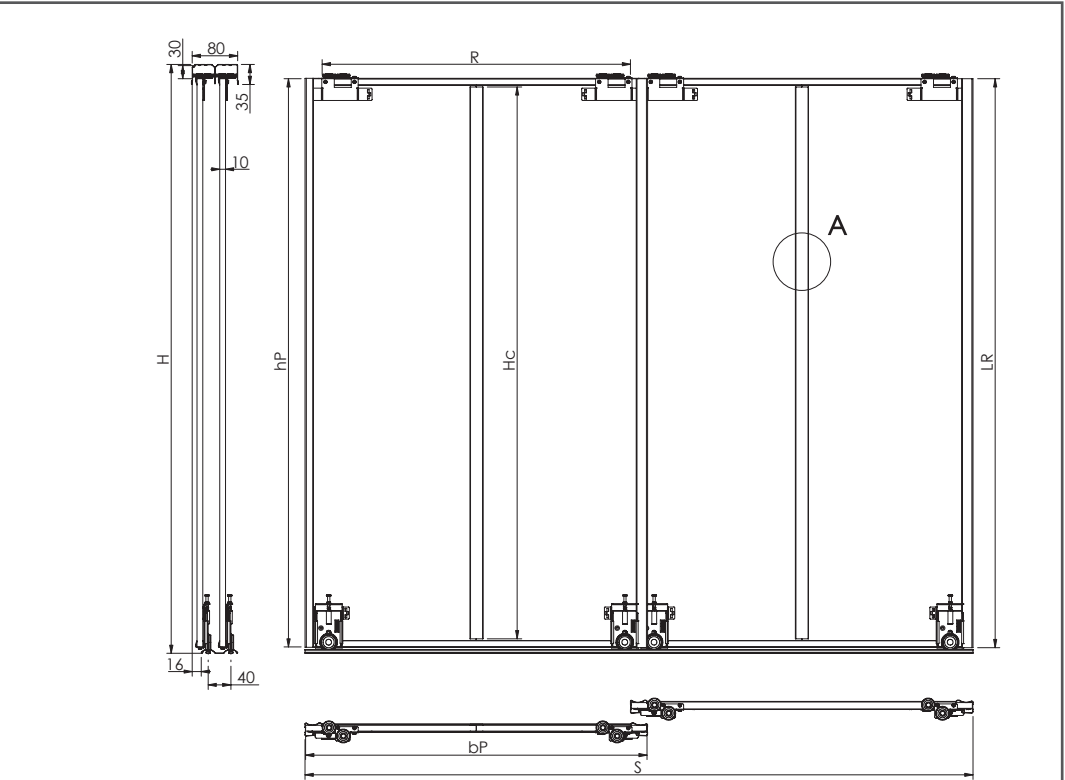
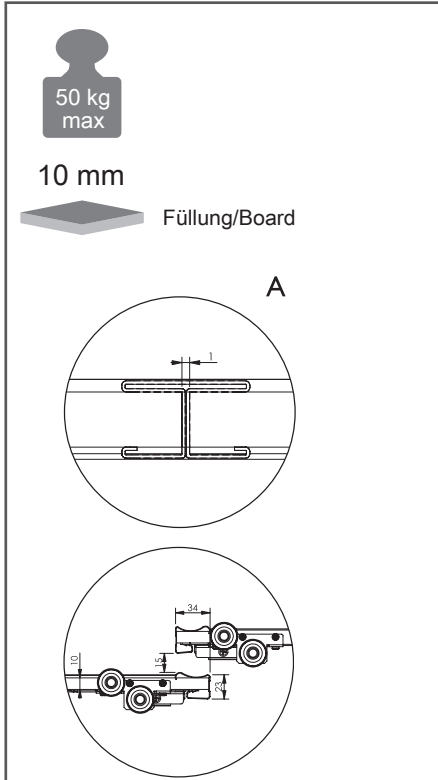


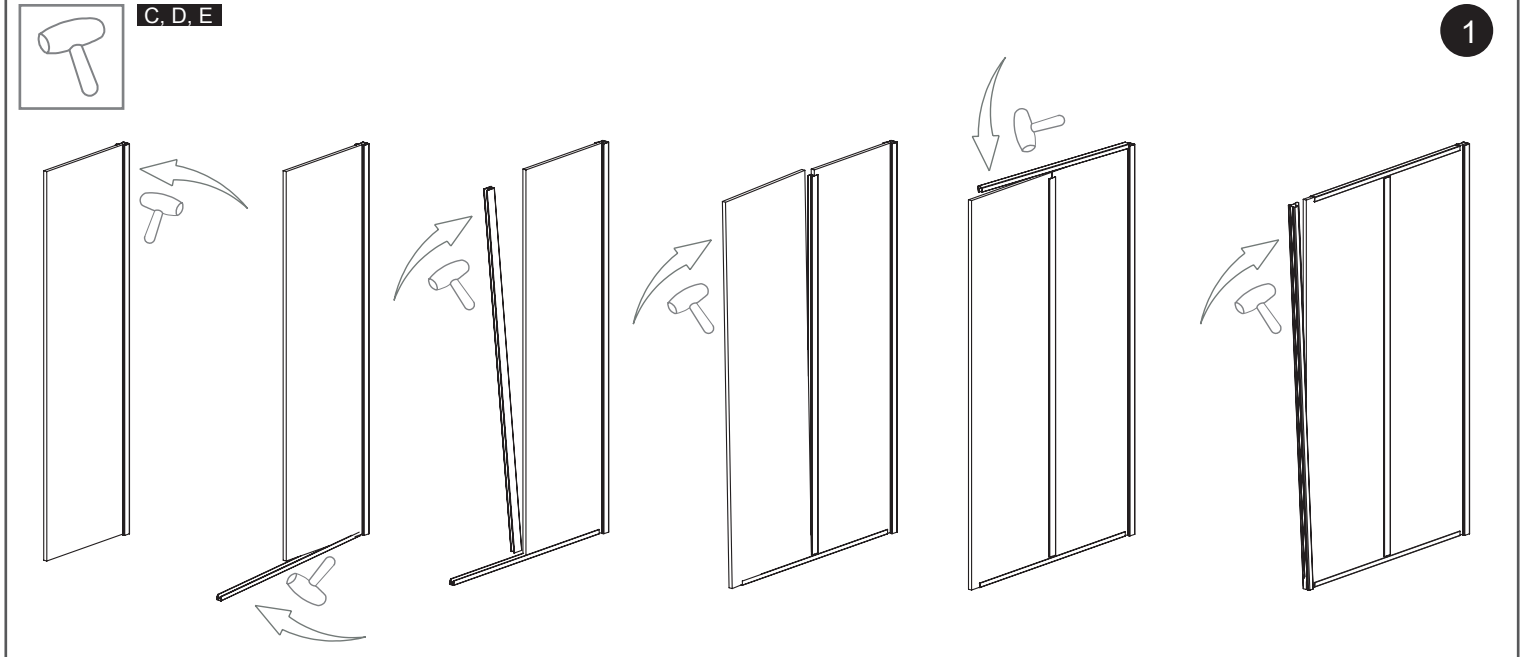
	A Laufwagen 1920	B seitliches Rahmenprofil 1828.1	C Rahmenprofil oben & unten 1829	D Vertikalprofil füllungsteilend 1830	E Bodenschiene zweiläufig 1815.5	F Führungsrolle 1819	G 3x13	I 3x10
--	-------------------------	---	---	--	---	-----------------------------	---------------	---------------



BS-Komplett

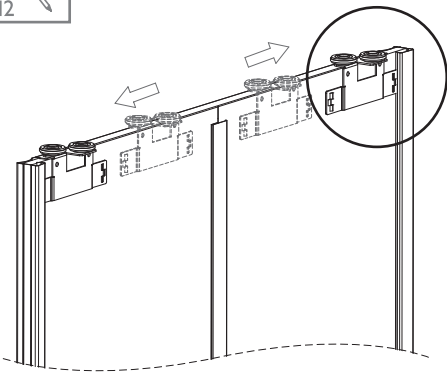


10 mm	Anzahl der Türen n / Quantity of doors n	n = 2	n = 3	n = 4	n = 5	n = 6	n = 7	n = 8
	Füllungshöhe hP [mm] / Board height hP [mm]		hP = H-42					
Füllungsbreite bP [mm] / Board width bP [mm]		$bP=(S+30)/2$	$bP=(S+62)/3$	$bP=(S+94)/4$	$bP=(S+126)/5$	$bP=(S+158)/6$	$bP=(S+190)/7$	$bP=(S+222)/8$
Oberes, unteres Rahmenprofil [mm] / Upper, lower rail R [mm]		$R = bP - 34$						
Länge Griffprofil LR [mm] / Handle length LR [mm]		$LR = H - 40$						
Aufrechtes H.-Profil [mm] / Connector length [mm]		$Hc = hP - 29$						

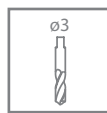




B, J

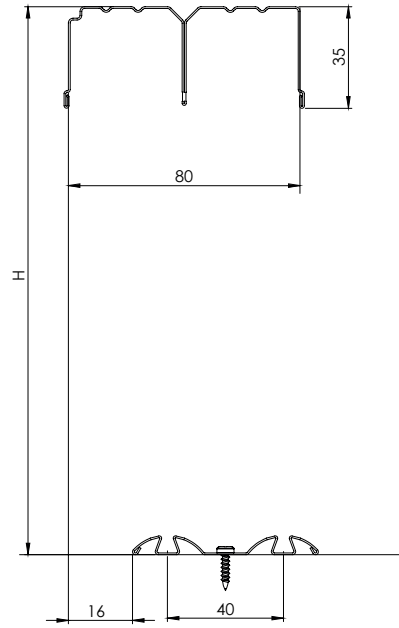


2

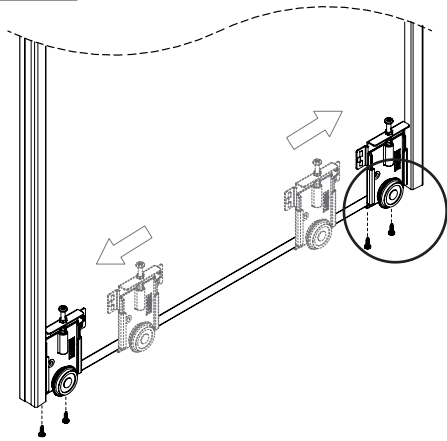


A, F, I

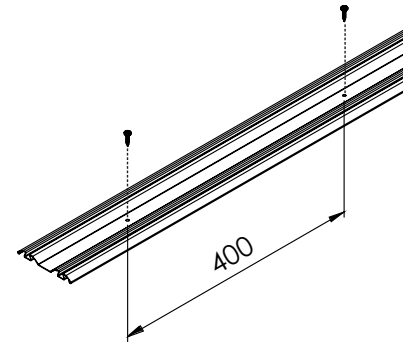
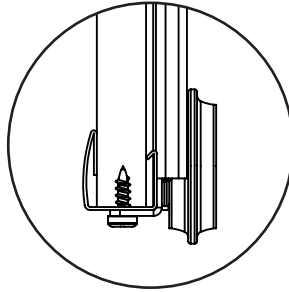
4



G, J



3



5



6

